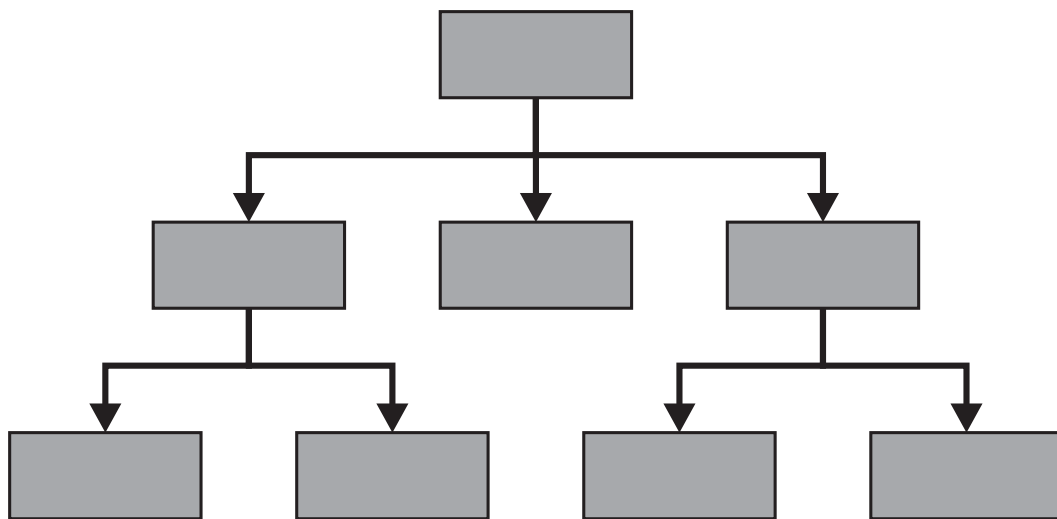


***A Comprehensive Guide
to
Serial Attached SCSI (SAS)***



***David A. Deming
Robert W. Kembel***



Copyright © 2005 by David A. Deming and Robert W. Kembel

All rights reserved. Except for brief passages to be published in a review or as citation of authority, no part of this book may be reproduced or transmitted in any form or by any means electronic or mechanical, including photocopying, recording, or by any information storage and retrieval system, without prior written permission from the publisher.

If trademarks or tradenames of any companies or products have been used within this book, no such uses are intended to convey endorsement or other affiliations with the book. Any brand names or products used within this book are trademarks or registered trademarks of their respective holders.

Though the author and publisher have made every attempt to ensure the accuracy and completeness of the information contained in this book, they assume no responsibility for errors, inaccuracies, omissions, or any inconsistency therein. The reader is strongly advised to refer to the appropriate standards documents before beginning any design activities.

ISBN 0-931836-61-1

Published by:

**Northwest Learning Associates, Inc.
3061 N. Willow Creek Drive
Tucson, AZ 85712
520-881-0877, Fax: 520-881-0632
email: inquiries@NLAbooks.com**

Printed in the United States of America

10 9 8 7 6 5 4 3 2 1

Contents

| | |
|-------------------------------------------------------------------------|-----------|
| List of Figures | xix |
| List of Tables | xxvii |
| Preface | xxix |
| Foreword | xxxix |
| Acknowledgments | xxxii |
| Section I. SAS Architecture and Concepts | 1 |
| 1. Introduction to SAS | 3 |
| 1.1 What is Serial Attached SCSI? | 3 |
| 1.2 A Brief History of SCSI | 3 |
| 1.3 Why Serial Attached SCSI? | 5 |
| 1.3.1 SAS Roadmap | 7 |
| 1.3.2 What SAS Isn't | 7 |
| 1.4 The SAS and SCSI Architectures | 8 |
| 1.4.1 SAS Initiator Devices | 9 |
| 1.4.2 SAS Target Devices | 9 |
| 1.4.3 SAS Expander Devices | 9 |
| 1.4.4 SAS Ports | 9 |
| 1.4.5 SAS Protocols | 10 |
| 1.5 SAS Names and Addresses | 11 |
| 1.5.1 SCSI Device Name | 11 |
| 1.5.2 SCSI Port Name | 12 |
| 1.5.3 SAS Addresses | 12 |
| 1.5.4 SAS Port Identifier | 13 |
| 1.5.5 PHY identifiers | 13 |
| 1.6 SAS Structure and Layers | 13 |
| 1.6.1 SAS Structure with Multiple Protocols | 15 |
| 1.6.2 Information Encapsulation | 15 |
| 1.6.3 Transmit Data Path and State Machines | 15 |
| 1.7 SAS, the SCSI Bus, Fibre Channel and SATA | 15 |
| 1.7.1 SAS = SCSI Bus + Fibre Channel + SATA | 15 |
| 1.7.2 SAS, the SCSI Bus and Fibre Channel All Carry SCSI Commands | 17 |
| 1.7.3 SAS Expanders Use Arbitration | 19 |
| 1.7.4 Circuit Switching and Frame Switching | 19 |
| 1.7.5 SAS is Serial | 20 |
| 1.7.6 SAS Uses Embedded Clocking | 21 |
| 1.7.7 SAS Does Not Have Messages | 21 |
| 2. SAS Connections and Protocols | 23 |
| 2.1 SAS Connections | 23 |

| | | |
|-----------|-------------------------------------------------------|-----------|
| 2.2 | Serial SCSI Protocol (SSP) | 24 |
| 2.2.1 | SSP Frame Acknowledgment | 25 |
| 2.2.2 | SSP Flow Control Characteristics | 25 |
| 2.2.3 | SSP Frame Transmission Example | 25 |
| 2.2.4 | SSP Task Management and Control-Type Command Examples | 26 |
| 2.2.5 | SSP Read Command Example | 26 |
| 2.2.6 | SSP Write Command Example | 27 |
| 2.3 | Serial Management Protocol (SMP) | 27 |
| 2.3.1 | SMP Protocol Example | 27 |
| 2.4 | SATA Tunneled Protocol (STP) | 28 |
| 2.4.1 | STP Frame Transmission Example | 28 |
| 2.4.2 | STP Characteristics | 28 |
| 3. | SAS Configurations | 31 |
| 3.1 | Edge Expander Device Sets | 32 |
| 3.1.1 | Edge Expander Device Set Constraints | 33 |
| 3.1.2 | Edge Expander Routing Methods | 33 |
| 3.1.3 | Edge Expander Device Set Boundary | 34 |
| 3.2 | Fanout Expander | 36 |
| 3.3 | Wide Port Configurations | 37 |
| 3.4 | SAS JBOD With Integrated Expanders | 39 |
| 4. | SAS Service Delivery Subsystem | 41 |
| 4.1 | SAS Physical Links | 41 |
| 4.1.1 | Differential Signaling | 41 |
| 4.1.2 | SAS PHYs | 41 |
| 4.2 | 8b10b Encoding | 42 |
| 4.3 | Dwords and Primitives | 42 |
| 4.3.1 | Primitives and Dword Characteristics | 43 |
| 4.3.2 | SAS Primitives | 43 |
| 4.4 | Frame Transmission | 44 |
| 4.4.1 | Frame Protocol Example | 44 |
| 4.5 | Out-of-Band Signaling (OOB) | 45 |
| 4.5.1 | Device Determination Using OOB | 45 |
| 4.5.2 | Speed Negotiation | 45 |
| 4.6 | SAS Resets | 46 |
| 4.6.1 | SAS Reset Sequences | 46 |
| 4.7 | Device Identification | 47 |
| 4.7.1 | Attached Device Aware Capable | 48 |
| 4.8 | Connections | 48 |
| 4.8.1 | Connection Setup (OPEN) | 49 |
| 4.8.2 | Connection Characteristics | 49 |
| 4.8.3 | Connection Removal (CLOSE) | 50 |
| 4.8.4 | Wide Ports and Multiple Connections | 50 |
| 4.9 | Pathways | 51 |
| 4.9.1 | Pathway | 53 |
| 4.9.2 | Partial Pathway | 53 |

| | | |
|-----------------------------------------------|----------------------------------------------------|-----------|
| 4.9.3 | Blocked Partial Pathways and Deadlock | 53 |
| 4.10 | Rate Matching | 55 |
| 5. | SAS and SCSI Standards | 57 |
| 5.1 | SCSI Standards | 59 |
| 5.2 | Serial ATA Standards | 60 |
| 5.3 | Small Form Factor (SFF) Committee Documents | 61 |
| Section II. Serial SCSI Protocol | | 63 |
| 6. | SCSI Application Layer | 65 |
| 6.1 | SCSI Architecture Model | 65 |
| 6.1.1 | The SCSI Client-Server Model | 66 |
| 6.2 | SCSI Domain | 67 |
| 6.2.1 | SCSI Initiator Model | 68 |
| 6.2.2 | SCSI Target/Logical Unit Model | 69 |
| 6.3 | SCSI-3 Primary Commands | 71 |
| 6.4 | SCSI Addressing and Names | 72 |
| 6.5 | SCSI Data Transfer Model | 72 |
| 6.6 | SCSI Execute Command Model | 73 |
| 6.6.1 | Service Response | 73 |
| 6.6.2 | SCSI Nexus | 74 |
| 6.6.3 | SCSI Command Descriptor Block (CDB) | 74 |
| 6.6.4 | Task Attribute (Queue Type) | 76 |
| 6.6.5 | Data-In Buffer Size | 77 |
| 6.6.6 | Data-Out Buffer | 77 |
| 6.6.7 | Data-Out Buffer Size | 77 |
| 6.6.8 | Autosense Request | 78 |
| 6.6.9 | SCSI Status | 78 |
| 6.6.10 | Sense Data | 78 |
| 6.6.11 | Data-In Buffer | 79 |
| 6.7 | Task Management Functions | 79 |
| 6.7.1 | Task Management Function Requests | 79 |
| 6.7.2 | Task Management Function Responses | 80 |
| 6.8 | SCSI Application Layer Items Affected By SAS | 80 |
| 6.8.1 | SCSI Commands | 80 |
| 6.8.2 | SCSI Port Driver Impact | 81 |
| 6.8.3 | Disconnect-Reconnect Mode Page | 82 |
| 6.8.4 | Protocol-Specific Port Mode Page | 84 |
| 6.8.5 | Protocol-Specific Port Mode Sub-Page | 85 |
| 6.8.6 | SAS PHY Mode Descriptor | 86 |
| 6.8.7 | Protocol-Specific Logical Unit Mode Page | 86 |
| 6.8.8 | SCSI Log Parameters | 87 |
| 6.8.9 | Protocol-Specific Log Parameter | 88 |
| 6.8.10 | SAS PHY Log Descriptor | 89 |
| 6.8.11 | SCSI Vital Product Data (VPD) | 90 |
| 6.8.12 | SCSI Power Conditions | 91 |

| | | |
|-----------|--------------------------------------------------------------------|------------|
| 6.9 | SCSI Application Layer Power Condition (SA_PC) State Machine | 91 |
| 6.9.1 | SA_PC_0:Powered_On State | 93 |
| 6.9.2 | SA_PC_1:Active State | 93 |
| 6.9.3 | SA_PC_2:Idle State | 93 |
| 6.9.4 | SA_PC_3:Standby State | 94 |
| 6.9.5 | SA_PC_4:Stopped State | 94 |
| 6.9.6 | 10.2.9.2.7 SA_PC_5:Active_Wait State | 95 |
| 6.9.7 | SA_PC_6:Idle_Wait state | 96 |
| 7. | SSP Transport Layer | 97 |
| 7.1 | SCSI Transport Protocol Services | 97 |
| 7.1.1 | Send SCSI Command | 98 |
| 7.1.2 | SCSI Command Received | 99 |
| 7.1.3 | Send Command Complete | 100 |
| 7.1.4 | Command Complete Received | 101 |
| 7.1.5 | Send Data-In Transport Protocol Service Request | 102 |
| 7.1.6 | Data-In Delivered | 103 |
| 7.1.7 | Receive Data-Out | 104 |
| 7.1.8 | Data-Out Received | 105 |
| 7.1.9 | Send Task Management Request | 106 |
| 7.1.10 | Task Management Request Received | 107 |
| 7.1.11 | Task Management Function Executed | 107 |
| 7.1.12 | Received Task Management Function-Executed | 109 |
| 7.2 | SSP Information Units | 110 |
| 7.2.1 | COMMAND Information Unit | 111 |
| 7.2.2 | TASK Information Unit | 113 |
| 7.2.3 | XFER_RDY Information Unit | 114 |
| 7.2.4 | DATA Information Unit | 115 |
| 7.2.5 | RESPONSE Information Unit | 115 |
| 7.3 | SSP Frame Format | 117 |
| 7.3.1 | SAS Address Hashing | 121 |
| 7.4 | SSP Frame Sequence Examples | 121 |
| 7.4.1 | SSP Task Management and Control-Type Command Example | 122 |
| 7.4.2 | SSP Read Command | 122 |
| 7.4.3 | SSP Write Command | 123 |
| 7.4.4 | SSP Write Command (First Burst Enabled) | 123 |
| 8. | SSP Link Layer | 125 |
| 8.1 | SSP Link Layer Overview | 125 |
| 8.1.1 | Full Duplex Operation | 125 |
| 8.1.2 | SSP Frame Characteristics | 125 |
| 8.2 | SSP Flow Control | 126 |
| 8.2.1 | Credit Deadlock Avoidance | 127 |
| 8.2.2 | SSP Credit Blocked | 127 |
| 8.3 | SSP Frame Acknowledgement | 127 |
| 8.3.1 | ACK/NAK Balance | 127 |
| 8.3.2 | Interlocked and Non-Interlocked Frames | 128 |

| | | |
|------------|--------------------------------------------------------------------------------|------------|
| 8.4 | Closing an SSP Connection | 129 |
| 8.4.1 | DONE Primitives | 129 |
| 8.5 | SSP Done Timeout Trace | 129 |
| 9. | SSP Error Handling | 131 |
| 9.1 | SCSI Application Layer Error Handling | 131 |
| 9.1.1 | “Send SCSI Command” Errors | 131 |
| 9.1.2 | Second “Command Complete Received” | 132 |
| 9.1.3 | “Send Task Management” Errors | 132 |
| 9.1.4 | “Command Complete Received” Errors | 133 |
| 9.1.5 | “Receive Data-Out” Errors | 134 |
| 9.2 | SSP Transport Layer Handling of Link Layer Errors | 134 |
| 9.2.1 | COMMAND Frame Errors | 135 |
| 9.2.2 | XFER_RDY Frame Error With Transport Layer Retries | 139 |
| 9.2.3 | XFER_RDY Frame Without Transport Layer Retries | 141 |
| 9.2.4 | DATA Frame Errors With Transport Layer Retries | 142 |
| 9.2.5 | DATA Frame Errors Without Transport Layer Retries | 145 |
| 9.2.6 | RESPONSE Frame Errors | 148 |
| 9.2.7 | TASK Frame Errors | 149 |
| 9.3 | SSP Transport Layer Handling of Transport Layer Errors | 150 |
| 9.3.1 | SSP Initiator Port Handling of Transport Layer Errors | 150 |
| 9.3.2 | SSP Target Port Handling of Transport Layer Errors | 151 |
| 9.4 | SCSI Transport Protocol Event Notifications | 153 |
| 10. | SSP Trace Examples | 155 |
| 10.1 | Test Unit Ready Command Trace | 156 |
| 10.2 | Read (10) Command | 158 |
| 10.3 | SSP Write (10) Command | 160 |
| 11. | Reading SAS State Machine Diagrams | 163 |
| 11.1 | State Machine Conventions | 163 |
| 11.1.1 | Designators and State Names | 164 |
| 11.1.2 | Transitions | 164 |
| 11.1.3 | Messages | 166 |
| 11.1.4 | Requests, Indications, Confirmations, Responses, and Event Notifications | 166 |
| 11.2 | State Machine Example | 166 |
| 12. | SSP Transport Layer (ST) State Machines | 169 |
| 12.1 | SSP Transport Layer (ST) Initiator State Machines | 169 |
| 12.2 | Initiator Frame Router (ST_IFR) State Machine | 169 |
| 12.2.1 | ST_IFR:Initiator_Frame_Router State | 171 |
| 12.3 | Initiator Transport Server (ST_ITS) State Machine | 175 |
| 12.3.1 | ST_ITS1:Initiator_Start State | 176 |
| 12.3.2 | ST_ITS2:Send_Frame State | 176 |
| 12.3.3 | ST_ITS3:Prepare_Command State | 179 |
| 12.3.4 | ST_ITS4:Prepare_Task State | 180 |
| 12.3.5 | ST_ITS5:Prepare_Data_Out State | 181 |
| 12.3.6 | ST_ITS6:Receive_Data_In State | 182 |

| | | |
|---------------------|------------------------------------------------------------------|------------|
| 12.3.7 | ST_ITS7:Process_Data_In State | 183 |
| 12.4 | SSP Transport Target (ST_T) State Machines | 183 |
| 12.5 | ST Target Frame Router (ST_TFR) State Machine | 183 |
| 12.6 | ST_TTS (Target Transport Server) State Machine | 190 |
| 12.6.1 | ST_TTS1:Target_Start State | 190 |
| 12.6.2 | ST_TTS2:Target_Send_Frame State | 191 |
| 12.6.3 | ST_TTS3:Prepare_Data_In State | 194 |
| 12.6.4 | ST_TTS4:Prepare_Xfer_Rdy State | 196 |
| 12.6.5 | ST_TTS5:Receive_Data_Out State | 197 |
| 12.6.6 | ST_TTS6:Process_Data_Out State | 198 |
| 12.6.7 | ST_TTS7:Prepare_Response State | 198 |
| 13. | SSP Link Layer State Machines | 201 |
| 13.1 | Transmitter and Receiver Messages | 201 |
| 13.2 | SSP_TIM (Transmit Interlocked Frame Monitor) State Machine | 202 |
| 13.3 | SSP_TCM (Transmit Frame Credit Monitor) State Machine | 205 |
| 13.4 | SSP_D (DONE Control) State Machine | 205 |
| 13.5 | SSP_TF (Transmit Frame Control) State Machine | 206 |
| 13.5.1 | SSP_TF1:Connected_Idle state | 206 |
| 13.5.2 | SSP_TF2:Tx_Wait State | 207 |
| 13.5.3 | SSP_TF3:Indicate_Frame_Tx State | 208 |
| 13.5.4 | SSP_TF4:Indicate_DONE_Tx State | 208 |
| 13.6 | SSP_RF (Receive Frame Control) State Machine | 209 |
| 13.7 | SSP_RCM (Receive Frame Credit Monitor) State Machine | 209 |
| 13.8 | SSP_RIM (Receive Interlocked Frame Monitor) State Machine | 210 |
| 13.9 | SSP_TC (Transmit Credit Control) State Machine | 211 |
| 13.10 | SSP_TAN (Transmit ACK/NAK Control) State Machine | 211 |
| Section III. | SMP Protocol | 213 |
| 14. | Serial Management Protocol (SMP) | 215 |
| 14.1 | SMP Functions | 217 |
| 14.2 | SMP Report General Function | 219 |
| 14.2.1 | SMP Report General Response | 219 |
| 14.3 | SMP Discover Function | 222 |
| 14.3.1 | SMP Discover Response | 222 |
| 14.4 | SMP Report Route Information Function | 227 |
| 14.4.1 | SMP Report Route Information Response | 227 |
| 14.5 | SMP Configure Route Information Function | 229 |
| 14.5.1 | SMP Configure Route Information Response | 230 |
| 14.6 | SMP Report Manufacturer Information Function | 231 |
| 14.6.1 | SMP Report Manufacturer Information Response | 231 |
| 14.7 | SMP Report PHY Error Log Function | 233 |
| 14.7.1 | SMP Report PHY Error Log Response | 233 |
| 14.8 | SMP Report PHY SATA Function | 235 |
| 14.8.1 | Report PHY SATA Response | 235 |
| 14.9 | SMP PHY Control Function | 237 |

| | | |
|------------|----------------------------------------------------------|------------|
| 14.9.1 | PHY Control Response | 239 |
| 14.10 | SAS Management Protocol (SMP) Services | 240 |
| 14.11 | SMP Transport Layer and Frame Format | 240 |
| 14.12 | SMP Link Layer Operation | 241 |
| 14.12.1 | SMP Protocol Characteristics | 241 |
| 14.12.2 | SMP Protocol Example | 242 |
| 14.12.3 | CLOSE Connection | 242 |
| 14.13 | SMP Report General Trace | 242 |
| 15. | Discovery Process | 245 |
| 15.1 | Attached Device Awareness | 245 |
| 15.2 | Discovery Process Initiation | 246 |
| 15.2.1 | Legal Attachments and Configuration Errors | 246 |
| 15.3 | Level-Order Traversal | 247 |
| 15.4 | Discovery Process Example | 249 |
| 15.4.1 | Discovery Process Diagram | 251 |
| 15.4.2 | Example Used For The Discovery Process | 251 |
| 15.4.3 | Discovery Process: Step 1 | 253 |
| 15.4.4 | Discovery Process: Step 2 | 255 |
| 15.4.5 | Discovery Process: Step 3 | 256 |
| 15.4.6 | Discovery Process: Step 4 | 257 |
| 15.4.7 | Discovery Process: Step 5 | 258 |
| 15.4.8 | Discovery Process: Step 6 | 259 |
| 15.4.9 | Discovery Process: Step 7 | 260 |
| 15.4.10 | Discovery Process: Step 8 | 261 |
| 15.4.11 | Discovery Process: Step 9 | 262 |
| 15.4.12 | Discovery Process: Step 10 | 263 |
| 15.5 | Route Table Optimization | 264 |
| 15.6 | Expander Route Index Order | 266 |
| 15.7 | Fanout Expander Discovery | 268 |
| 16. | SMP Transport Layer (MT) State Machines | 271 |
| 16.1 | SMP Transport Initiator Port (MT_IP) State Machine | 271 |
| 16.1.1 | MT_IP1:Idle State | 271 |
| 16.1.2 | MT_IP2:Send State | 272 |
| 16.1.3 | MT_IP3:Receive state | 273 |
| 16.2 | SMP Transport Target Port (MT_TP) State Machine | 273 |
| 16.2.1 | MT_TP1:Idle State | 273 |
| 16.2.2 | MT_TP2:Respond State | 274 |
| 17. | SMP Link Layer State Machines | 275 |
| 17.1 | SMP Initiator PHY (SMP_IP) State Machine | 275 |
| 17.1.1 | SMP Transmitter and Receiver | 275 |
| 17.1.2 | SMP_IP1:Idle state | 276 |
| 17.1.3 | SMP_IP2:Transmit_Frame State | 277 |
| 17.1.4 | SMP_IP3:Receive_Frame State | 277 |
| 17.2 | SMP Target PHY (SMP_TP) State Machine | 277 |
| 17.2.1 | SMP_TP1:Receive_Frame State | 278 |

| | | |
|--------------------|-----------------------------------------------------------------------|------------|
| 17.2.2 | SMP_TP2:Transmit_Frame state | 279 |
| Section IV. | SATA Tunneled Protocol | 281 |
| 18. | STP Transport and Link Layers | 283 |
| 18.1 | STP Application and Transport Layers | 283 |
| 18.1.1 | Initial Register - Device to Host FIS | 283 |
| 18.1.2 | TT (Transport Layer for STP Ports) State Machine | 283 |
| 18.1.3 | SATA Primitives | 283 |
| 18.2 | SATA Frame Characteristics | 284 |
| 18.2.1 | SATA Frame Transmission | 285 |
| 18.3 | SATA Flow Control | 285 |
| 18.3.1 | SATA Flow Control Budget | 285 |
| 18.3.2 | SATA Flow Control Example | 286 |
| 18.4 | STP Flow Control Rules | 286 |
| 18.4.1 | STP Flow Control Characteristics | 287 |
| 18.4.2 | Expander Flow Control Rules | 288 |
| 18.4.3 | SATA Outbound Flow Control | 288 |
| 18.5 | STP Connections | 289 |
| 18.5.1 | Initiator Port Opening an STP Connection | 289 |
| 18.5.2 | Target Port Opening an STP Connection | 290 |
| 18.5.3 | Closing an STP Connection | 292 |
| 18.6 | STP Affiliations | 292 |
| 18.7 | SATA Interface Power Management | 292 |
| 18.7.1 | SATA Power Management | 293 |
| 18.8 | Miscellaneous STP Link Layer Notes | 293 |
| 18.9 | SATA Port Multipliers and Port Selectors | 293 |
| 18.9.1 | SATA Port Multiplier | 293 |
| 18.9.2 | SATA Port Selector | 294 |
| 18.10 | STP Differences From SATA | 296 |
| 18.10.1 | STP Differences From Serial ATA (SATA) | 296 |
| 18.10.2 | STP Differences From Serial ATA-II | 296 |
| Section V. | SAS Port Layer | 297 |
| 19. | SAS Port Layer | 299 |
| 19.1 | Port Layer Example Scenario | 299 |
| 19.2 | Port Layer Interfaces | 301 |
| 20. | SAS Port Layer (PL) State Machines | 303 |
| 20.1 | Port Layer (PL) State Machines | 303 |
| 20.2 | PL_OC State Machine Overview | 303 |
| 20.2.1 | Port Level Overall Control (PL_OC) Timers | 304 |
| 20.2.2 | PL_OC1:Idle State | 304 |
| 20.2.3 | PL_OC2:Overall_Control State | 305 |
| 20.2.4 | PL_OC2:Overall_Control State (Establishing Connections) | 306 |
| 20.2.5 | PL_OC2:Overall_Control State (Connection Established) | 309 |
| 20.2.6 | PL_OC2:Overall_Control State (Unable To Establish A Connection) | 310 |

| | | |
|--------|-----------------------------------------------------------------|-----|
| 20.2.7 | PL_OC2:Overall_Control State (Connection Management) | 310 |
| 20.2.8 | PL_OC2:Overall_Control State (Frame Transmission) | 312 |
| 20.2.9 | PL_OC2:Overall_Control State (Frame Transmission Cancellations) | 314 |
| 20.3 | PL_PM State Machine Overview | 314 |
| 20.3.1 | PL_PM1:Idle State | 314 |
| 20.3.2 | PL_PM2:Req_Wait State | 316 |
| 20.3.3 | PL_PM2:Req_Wait (Establishing A Connection) | 316 |
| 20.3.4 | PL_PM2:Req_Wait (Connection Established) | 316 |
| 20.3.5 | PL_PM2:Req_Wait (Unable To Establish A Connection) | 317 |
| 20.3.6 | PL_PM2:Req_Wait (Connection Management) | 318 |
| 20.3.7 | PL_PM3:Connected State | 318 |
| 20.3.8 | PL_PM4:Wait_For_Close State | 321 |

Section VI. SAS Link Layer323

| | | |
|-----------------------|---------------------------------------|------------|
| 21. Primitives | | 325 |
| 21.1 | What are Primitives? | 325 |
| 21.1.1 | Primitives Notation | 325 |
| 21.1.2 | Primitive Characteristics | 326 |
| 21.1.3 | Primitives Grouped by Connection Type | 326 |
| 21.2 | Primitive Sequences | 327 |
| 21.2.1 | Single Primitive Sequence | 327 |
| 21.2.2 | Repeated Primitive Sequence | 328 |
| 21.2.3 | Triple Primitive Sequences | 328 |
| 21.2.4 | Redundant Primitive Sequences | 329 |
| 21.3 | Primitive Descriptions | 330 |
| 21.3.1 | AIP (Arbitration in Progress) | 330 |
| 21.3.2 | Align | 330 |
| 21.3.3 | Break | 331 |
| 21.3.4 | Broadcast | 331 |
| 21.3.5 | Close Primitive | 332 |
| 21.3.6 | SOAF and EOAF Primitives | 332 |
| 21.3.7 | Error | 332 |
| 21.3.8 | Hard_Reset | 333 |
| 21.3.9 | NOTIFY | 333 |
| 21.3.10 | Open_Accept and Open_Reject | 334 |
| 21.3.11 | Open_Reject Retry Primitives | 334 |
| 21.3.12 | ACK | 336 |
| 21.3.13 | Credit_Blocked | 336 |
| 21.3.14 | DONE | 337 |
| 21.3.15 | NAK | 337 |
| 21.3.16 | RRDY | 337 |
| 21.3.17 | SOF and EOF | 338 |
| 21.3.18 | STP Primitives | 338 |
| 21.4 | Primitive Usage Table | 339 |
| 21.5 | Primitive Encoding | 342 |

| | |
|-----------------------------------------------------------------|------------|
| 22. Clock Skew and Scrambling | 345 |
| 22.1 ALIGN/NOTIFY Insertion Requirements | 346 |
| 22.2 Elasticity Buffer | 347 |
| 22.2.1 Clock Skew Management Examples | 348 |
| 22.3 Idle Physical Links | 348 |
| 22.4 Scrambling Overview | 349 |
| 22.4.1 Scrambling Data Dword Types | 349 |
| 22.5 Transmit and Receive Path Bit Ordering | 350 |
| 22.5.1 Transmit Path Bit Ordering | 350 |
| 22.5.2 Receive Path Bit Ordering | 352 |
| 22.5.3 SAS STP Transmit Bit Order | 353 |
| 22.5.4 SAS STP Receive Bit Order | 354 |
| 22.6 Cyclic Redundancy Check (CRC) | 355 |
| 23. Address Frames | 357 |
| 23.1 Address Frame Characteristics | 357 |
| 23.1.1 Address Frame Format | 357 |
| 23.2 IDENTIFY Address Frame | 357 |
| 23.3 OPEN Address Frame | 359 |
| 24. Identification and Hard Reset | 363 |
| 24.1 Identification and Hard Reset Sequence Overview | 363 |
| 24.2 Identification and Hard Reset Sequences | 363 |
| 24.2.1 SAS Hard Reset Sequence | 364 |
| 24.2.2 SAS Initiator Device Rules | 365 |
| 24.2.3 Fanout Expander Device Rules | 365 |
| 24.2.4 Edge Expander Device Rules | 366 |
| 25. Connections | 367 |
| 25.1 Connection Setup | 368 |
| 25.1.1 Arbitration Wait Time (AWT) | 370 |
| 25.1.2 Open Timeout Timer | 371 |
| 25.1.3 Responses To An OPEN Address Frame | 372 |
| 25.1.4 Connection Response: Arbitration In Progress (AIP) | 372 |
| 25.1.5 Connection Response: OPEN_ACCEPT | 373 |
| 25.1.6 Connection Response: OPEN_REJECT | 373 |
| 25.1.7 OPEN_REJECT Priorities | 374 |
| 25.1.8 Connection Response: OPEN Address Frame | 375 |
| 25.1.9 Connection Response: BREAK | 377 |
| 25.1.10 Connection Request Timeout Example | 377 |
| 25.2 Processing During an Open Connection | 377 |
| 25.3 Closing a Connection | 378 |
| 25.3.1 Normal Close Protocol | 378 |
| 25.3.2 CLOSE Protocol Example | 379 |
| 25.3.3 Aborting a Connection with BREAK | 379 |
| 25.3.4 Using BREAK to Abort a Connection: Case 1 | 380 |
| 25.3.5 Using BREAK to Abort a Connection: Case 2 | 380 |
| 25.3.6 Using BREAK to Abort a Connection: Case 3 | 381 |

| | |
|------------------------------------------------------------------|------------|
| 26. Expanders | 383 |
| 26.1 Expander Structure | 383 |
| 26.1.1 Expander Ports and PHYs | 384 |
| 26.1.2 Expander Connection Manager (ECM) | 384 |
| 26.1.3 Expander Connection Router (ECR) | 384 |
| 26.1.4 Broadcast Primitive Processor (BPP) | 385 |
| 26.1.5 SMP Target Port | 385 |
| 26.1.6 Embedded Initiator/Target Ports | 385 |
| 26.1.7 SAS to SATA Bridges | 386 |
| 26.2 Expander Addressing | 386 |
| 26.3 Expander Routing | 387 |
| 26.3.1 ECM Routing Methods | 387 |
| 26.3.2 Routing Rules | 388 |
| 26.3.3 Routing Precedence | 388 |
| 26.3.4 Expander Route Table | 388 |
| 26.4 Expander Types | 390 |
| 26.4.1 Edge Expander | 390 |
| 26.4.2 Edge Expander Device Sets | 390 |
| 26.4.3 Fanout Expander | 391 |
| 26.5 Expander IDENTIFY Address Frame | 391 |
| 26.6 Expander Internal Interface Model | 392 |
| 26.7 Expander Connection Manager (ECM) Arbitration | 394 |
| 26.7.1 PHY Status to the Expander Connection Manager (ECM) | 395 |
| 26.7.2 Arbitration Status From the ECM | 395 |
| 26.7.3 Arbitration Fairness | 398 |
| 26.7.4 Retry Priority Status | 398 |
| 26.8 Contention For Path Resources and Deadlock Recovery | 398 |
| 26.8.1 Waiting on Connection | 399 |
| 26.9 Deadlocks and Pathway Recovery | 400 |
| 26.9.1 Deadlock Recovery Within a Single Expander | 401 |
| 26.9.2 Circular Deadlocks | 402 |
| 26.9.3 Pathway Recovery | 402 |
| 26.10 Expander Connection Router (ECR) | 404 |
| 26.10.1 Invalid Dword Processing | 405 |
| 26.11 Broadcast Primitive Processor (BPP) | 405 |
| 26.12 Example Expander Implementation | 406 |
| 26.13 Expander Scenario Examples | 407 |
| 26.13.1 Connection Request: OPEN_ACCEPT | 408 |
| 26.13.2 Connection Request: OPEN_REJECT By End Device | 409 |
| 26.13.3 Connection Request: OPEN_REJECT By Expander | 410 |
| 26.13.4 Connection Request: Arbitration Lost | 411 |
| 26.13.5 Connection Request: Backoff and Retry | 412 |
| 26.13.6 Connection Request: Backoff and Reverse Path | 413 |
| 26.13.7 Connection Close: Non-Overlapping CLOSE Primitives | 414 |
| 26.13.8 Connection Close: Overlapping CLOSE Primitives | 415 |

| | | |
|------------|-----------------------------------------------------|------------|
| 26.13.9 | STP Connection: Originated by STP Initiator Port | 416 |
| 26.13.10 | STP Connection: Originated by STP Target Port | 417 |
| 27. | SAS Link Layer (SL) State Machines | 419 |
| 27.0.1 | SL Transmitter and Receiver | 419 |
| 27.1 | Receive Address Frame (SL_RA) State Machine | 421 |
| 27.2 | Connection Control (SL_CC) State Machine | 422 |
| 27.2.1 | SL_CC State Machine Messages | 422 |
| 27.2.2 | SL_CC0:Idle state | 423 |
| 27.2.3 | SL_CC1:ArbSel State | 423 |
| 27.2.4 | SL_CC2:Selected State | 425 |
| 27.2.5 | SL_CC3:Connected State | 427 |
| 27.2.6 | SL_CC4:DisconnectWait State | 427 |
| 27.2.7 | SL_CC5:BreakWait State | 428 |
| 27.2.8 | SL_CC6:Break State | 428 |
| 27.2.9 | SL_CC7:CloseSTP state | 428 |
| 28. | Identification and Hard Reset State Machines | 429 |
| 28.1 | SL_IR_TIR State Machine | 431 |
| 28.1.1 | SL_IR_TIR1:Idle State | 431 |
| 28.1.2 | SL_IR_TIR2:Transmit_Identify State | 431 |
| 28.1.3 | SL_IR_TIR3:Transmit_Hard_Reset State | 431 |
| 28.1.4 | SL_IR_TIR4:Completed State | 432 |
| 28.2 | SL_IR_RIF State Machine Overview | 432 |
| 28.2.1 | SL_IR_RIF1:Idle State | 432 |
| 28.2.2 | SL_IR_RIF2:Receive_Identify_Frame State | 432 |
| 28.2.3 | SL_IR_RIF3:Completed State | 433 |
| 28.3 | SL_IR_IRC State Machine Overview | 433 |
| 28.3.1 | SL_IR_IRC1:Idle State | 433 |
| 28.3.2 | SL_IR_IRC2:Wait State | 433 |
| 28.3.3 | SL_IR_IRC3:Completed State | 434 |
| 29. | Expander Link Layer (XL) State Machines | 435 |
| 29.1 | Expander Link Layer (XL) State Machine | 435 |
| 29.1.1 | XL State Machine Messages | 436 |
| 29.1.2 | XL Transmitter and Receiver Message | 436 |
| 29.1.3 | XL0:Idle State | 437 |
| 29.1.4 | XL1:Request_Path State | 437 |
| 29.1.5 | XL2:Request_Open state | 439 |
| 29.1.6 | XL3:Open_Confirm_Wait state | 440 |
| 29.1.7 | XL4:Open_Reject State | 441 |
| 29.1.8 | XL5:Forward_Open state | 441 |
| 29.1.9 | XL6:Open_Response_Wait state | 442 |
| 29.1.10 | XL7:Connected state | 444 |
| 29.1.11 | XL8:Close_Wait State | 444 |
| 29.1.12 | XL9:Break State | 445 |
| 29.1.13 | XL10:Break_Wait State | 445 |

| | |
|------------------------------------------------------------|------------|
| Section VII. SAS PHY Layer | 449 |
| 30. Dwords, Encoding and Serialization | 451 |
| 30.1 SAS Dword | 451 |
| 30.1.1 SAS and SATA Byte Ordering | 451 |
| 30.2 Encoding | 452 |
| 30.2.1 8b10b Description | 452 |
| 30.2.2 Why Encode the Data? | 453 |
| 30.2.3 Running Disparity | 453 |
| 30.2.4 Data Characters and Special Characters | 454 |
| 30.2.5 8b10b Bit and Byte Notation | 454 |
| 30.2.6 Encoding/Decoding Process | 455 |
| 30.2.7 5b/6b Subblock Encoding | 455 |
| 30.2.8 3b/4b Subblock Encoding | 457 |
| 30.2.9 8b10b Data Byte Encoding | 457 |
| 30.2.10 8b10b Special Character Encoding | 463 |
| 30.2.11 Comma Pattern | 463 |
| 30.2.12 Bit and Byte Transmission Order | 464 |
| 30.3 8b10b Error Detection | 464 |
| 30.3.1 Code Violation Errors | 465 |
| 30.3.2 Disparity Errors | 465 |
| 30.3.3 Error Detection | 465 |
| 30.4 8b10b Summary | 466 |
| 30.5 Transmitter Operation | 467 |
| 30.6 SAS Bit Transmission Order | 468 |
| 30.7 SAS Bit Reception Order | 469 |
| 31. Out-of-Band Signaling | 471 |
| 31.1 Out-of-Band (OOB) Signals | 471 |
| 31.1.1 OOB Signal Level Requirements | 471 |
| 31.1.2 OOB Signal Timing Requirements | 472 |
| 31.1.3 Out-of-Band Signal Detection | 472 |
| 31.2 Out-of-Band Detection Examples | 473 |
| 31.2.1 ALIGN Requirements | 475 |
| 31.2.2 Expander Devices | 475 |
| 31.3 OOB Signal Detector | 475 |
| 32. PHY Reset Sequences and Speed Negotiation | 477 |
| 32.1 PHY Reset Sequences Overview | 477 |
| 32.2 SAS to SAS PHY Reset | 477 |
| 32.3 SAS Speed Negotiation | 479 |
| 32.3.1 SAS Speed Negotiation Sequence | 479 |
| 32.4 Hot Plug Detection | 481 |
| 32.5 SATA PHY Reset and Speed Negotiation | 483 |
| 32.5.1 SATA Speed Negotiation Timings | 483 |
| 32.5.2 SAS to SATA PHY Reset | 484 |

| | |
|-----------------------------------------------------------|------------|
| 33. PHY Layer State Machines | 487 |
| 33.1 SP State Machine | 487 |
| 33.1.1 SP (PHY Layer) State Machine Characteristics | 487 |
| 33.1.2 SP Transmitter And Receiver | 488 |
| 33.2 SP (PHY Layer) State Machine | 489 |
| 33.2.1 SP0:OOB_COMINIT State | 489 |
| 33.2.2 SP1:OOB_AwaitCOMX State | 489 |
| 33.2.3 SP2:OOB_NoCOMSASTimeout State | 491 |
| 33.2.4 SP3:OOB_AwaitCOMINIT_Sent State | 491 |
| 33.2.5 SP4:OOB_COMSAS State | 491 |
| 33.2.6 SP5:OOB_AwaitCOMSAS_Sent State | 492 |
| 33.2.7 SP6:OOB_AwaitNoCOMSAS State | 492 |
| 33.2.8 SP7:OOB_AwaitCOMSAS State | 492 |
| 33.3 SP Speed Negotiation States | 493 |
| 33.3.1 SP8:SAS_Start State | 493 |
| 33.3.2 SP9:SAS_RateNotSupported State | 493 |
| 33.3.3 SP10:SAS_AwaitALIGN State | 493 |
| 33.3.4 SP11:SAS_AwaitALIGN1 State | 495 |
| 33.3.5 SP13:SAS_Pass State | 496 |
| 33.3.6 SP14:SAS_Fail State | 496 |
| 33.3.7 SP15:SAS_PHY_Ready State | 497 |
| 33.4 SP State Machine SATA States | 497 |
| 33.4.1 SP16:SATA_COMWAKE State | 497 |
| 33.4.2 SP17:SATA_AwaitCOMWAKE State | 499 |
| 33.4.3 SP18:SATA_AwaitNoCOMWAKE State | 499 |
| 33.4.4 SP19:SATA_AwaitALIGN State | 499 |
| 33.4.5 SP20:SATA_AdjustSpeed State | 499 |
| 33.4.6 SP21:SATA_TransmitALIGN State | 500 |
| 33.4.7 SP22:SATA_PHY_Ready State | 500 |
| 33.4.8 SP23:SATA_PM_Partial State | 500 |
| 33.4.9 SP24:SATA_PM_Slumber State | 501 |
| 33.5 SP SATA Port Selector State | 501 |
| 33.6 SP_DWS State Machine | 502 |
| 33.6.1 SP_DWS Receiver | 502 |
| 33.6.2 SP_DWS0:AcquireSync State | 504 |
| 33.6.3 SP_DWS1:Valid1 State | 504 |
| 33.6.4 SP_DWS2:Valid2 State | 504 |
| 33.6.5 SP_DWS3:SyncAcquired State | 505 |
| 33.6.6 SP_DWS4:Lost1 State | 505 |
| 33.6.7 SP_DWS5:Lost1Recovered State | 505 |
| 33.6.8 SP_DWS6:Lost2 State | 505 |
| 33.6.9 SP_DWS7:Lost2Recovered State | 506 |
| 33.6.10 SP_DWS8:Lost3 State | 506 |
| 33.6.11 SP_DWS9:Lost3Recovered State | 506 |

| | |
|-----------------------------------------------------------------|------------|
| Section VIII. SAS Physical Layer | 507 |
| 34. Cables and Connectors | 509 |
| 34.1 SATA Cables and Connectors | 509 |
| 34.1.1 SATA Connector Placement | 511 |
| 34.1.2 SATA Device Connector Pinout | 512 |
| 34.1.3 SATA Physical Cabling Example | 513 |
| 34.1.4 SATA Backplane Cabling Example | 514 |
| 34.2 SAS Cables and Connectors | 515 |
| 34.2.1 Single-Ported SAS Internal Cabled Environment | 515 |
| 34.2.2 Dual-Ported Internal Cabled Environment | 516 |
| 34.2.3 SAS Plug (Device) Connector | 516 |
| 34.2.4 SAS Backplane Connector | 517 |
| 34.2.5 SAS Internal Cables | 518 |
| 34.2.6 SAS - HBA, Multi-Lane Cabled and Backplane Example | 519 |
| 34.2.7 SAS Dual/Redundant HBAs and Backplane Example | 520 |
| 34.2.8 SAS External Cable Connector | 521 |
| 34.3 Hot-Plug Considerations | 522 |
| 34.3.1 Backplane Power Mating Sequence | 522 |
| 34.4 SAS/SATA Cables and Supported Links | 523 |
| 35. Transmitter and Receiver | 525 |
| 35.1 SAS Physical Link | 525 |
| 35.2 Differential Signaling | 526 |
| 35.2.1 Differential Signaling Levels | 527 |
| 35.2.2 D.C. Idle | 527 |
| 35.2.3 A.C. and D.C. Coupling | 528 |
| 35.3 Timing Requirements and Clocking | 528 |
| 35.3.1 Clock and Data Recovery | 528 |
| 35.3.2 Jitter | 529 |
| 35.4 Bit Error Rate (BER) Requirements | 529 |
| 35.5 The Eye Diagram or Mask | 530 |
| 35.6 Cable and Connector Losses | 531 |
| 35.6.1 Cable and Connector Losses | 531 |
| 35.7 Countering Interconnect Losses | 532 |
| 35.7.1 Transmitter Pre-Emphasis | 532 |
| 35.7.2 Receiver Equalization | 533 |
| 35.8 SAS vs. SATA Considerations | 534 |
| 35.8.1 SATA Devices and Spread-Spectrum Clocking (SSC) | 534 |
| 35.8.2 SAS and SATA Signaling Levels | 535 |
| 35.8.3 SATA Out-of-Band (OOB) Characters | 535 |
| 35.9 SAS Extended Distance Considerations | 535 |
| 35.9.1 Physical Link Considerations | 535 |
| 35.9.2 SAS Protocol Considerations | 536 |
| 35.10 SAS Transmitter and Receiver Specifications | 536 |
| 35.10.1 TxRx Compliance Points | 536 |
| 35.10.2 General Interface Characteristics | 537 |

| | |
|--------------------------------------------------------|------------|
| 35.10.3 Signal Characteristics at IT, CT, XT | 538 |
| 35.10.4 Signal Characteristics at IR, CR, and XR | 538 |
| 35.10.5 Maximum Allowable Jitter at IR, CR, XR | 540 |
| 35.10.6 Receiver Jitter Tolerance | 541 |
| 35.10.7 Impedance Specifications | 542 |
| Section IX. Reference Material | 543 |
| A. State Machine Messages | 543 |
| B. SCSI Sense Data | 547 |
| B.1 Sense Data Format | 548 |
| B.2 Sense Key Descriptions | 553 |
| B.3 Numerical List of ASC and ASCQ Assignments | 554 |
| C. SCSI Operation Codes | 565 |
| D. Glossary | 571 |
| D.1 Symbols and Abbreviations | 579 |
| Index | 583 |